

NEWS RELEASE

FOR IMMEDIATE RELEASE:

Oct. 21, 2020

CONTACT:

Nancy Nydam
404-657-2462

DPH Provides Update on COVID-19 Trends in Georgia

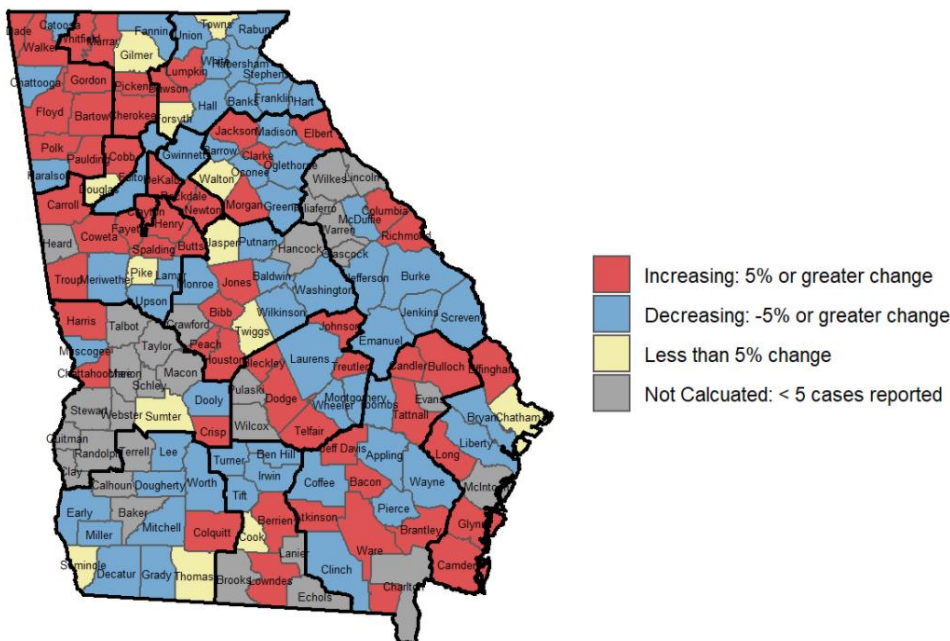
Atlanta – The Georgia Department of Public Health (DPH) is providing the following information regarding the fight against COVID-19 in Georgia:

COVID-19 Cases

- From **10/13 to 10/19**, the seven-day average of new cases reported **increased 3.8%**.
- The seven-day average of new cases reported is **down 65%** from our peak July 24.
- As of Oct. 13, there are **341,310 confirmed cases of COVID-19 and approximately 24,646 probable cases of COVID-19**, most identified through antigen testing. (A probable case meets at least one of the following criteria: has a positive antigen test on a respiratory specimen; OR has not had a confirmatory COVID-19 test but has symptoms compatible with COVID-19 AND a known exposure to a COVID-19 case; OR the individual has died and the death certificate lists COVID-19 disease or SARS-CoV-2 as an underlying cause of death or a significant condition contributing to death.)

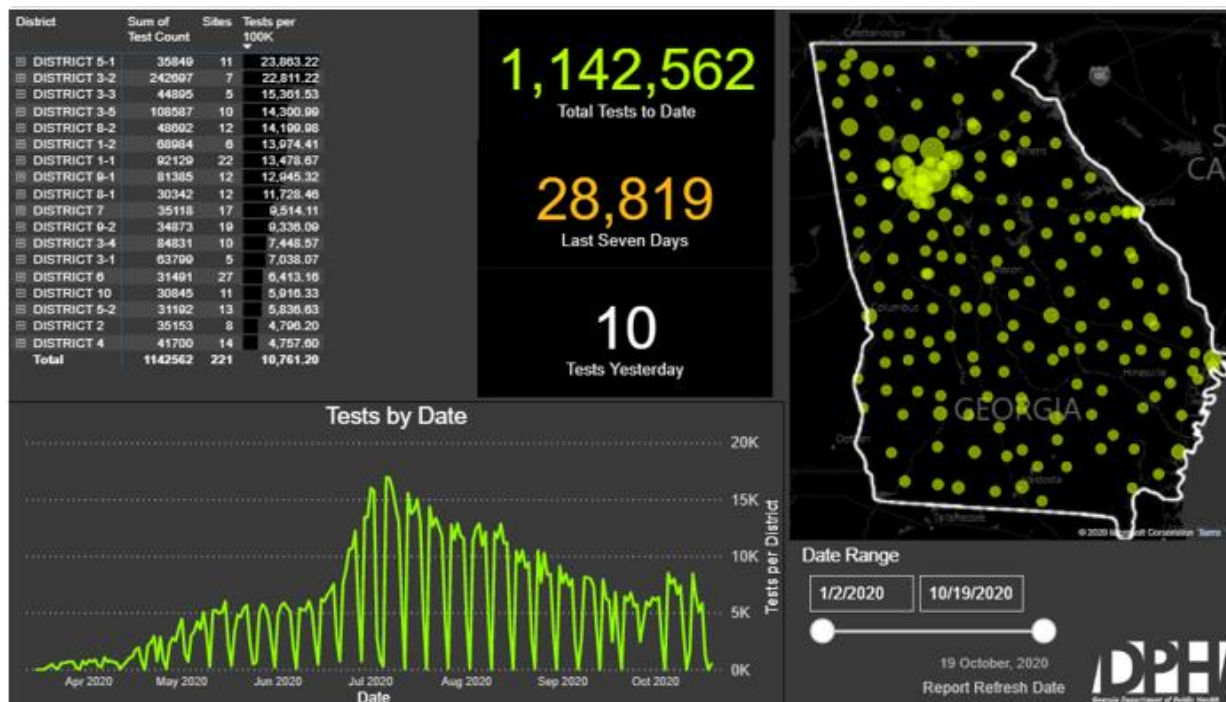
Confirmed COVID-19 Cases

Percent Change 10/03-10/09, 10/10-10/16



COVID-19 Testing

Georgia SPOCs



- As of Oct. 19, the state reported 3,314,279 (cumulative) COVID-19, tests reported to DPH through Electronic Laboratory Reports (ELR).
- The number of specimens collected at DPH SPOCs is **1,142,562**
- DPH is operating more than 220 SPOCs, including mobile and pop-up locations statewide.

Positivity Rate

The statewide percent positivity (7-day moving average) for PCR test increased from 5.7% on Oct. 12 to 5.9% on Oct. 19 or about 4%.

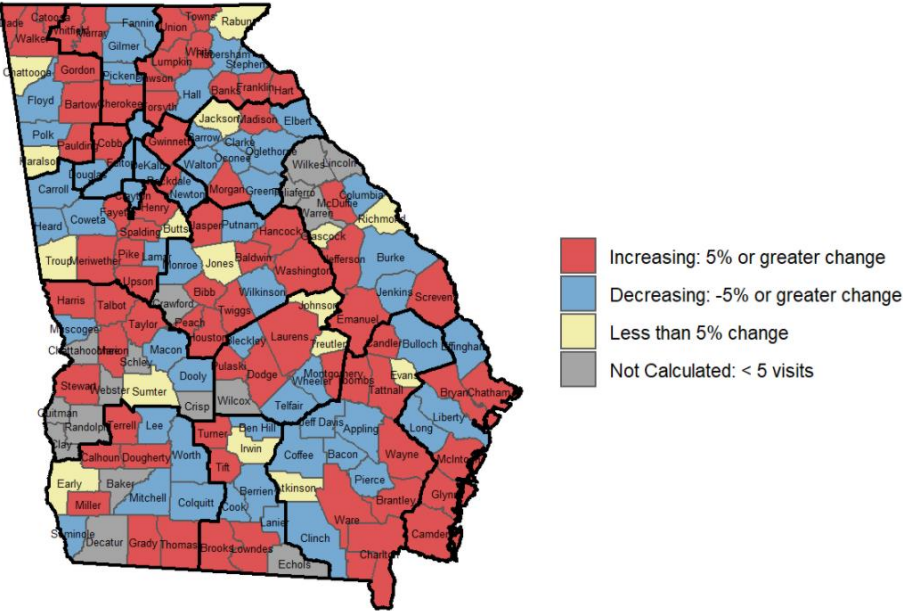
Hospitalizations

Daily hospitalizations for COVID-19 have decreased slightly from 1,325 on Oct. 13 to 1314 on Oct. 20. Hospitalizations have **decreased 59%** since a daily high of 3,200 on July 30.

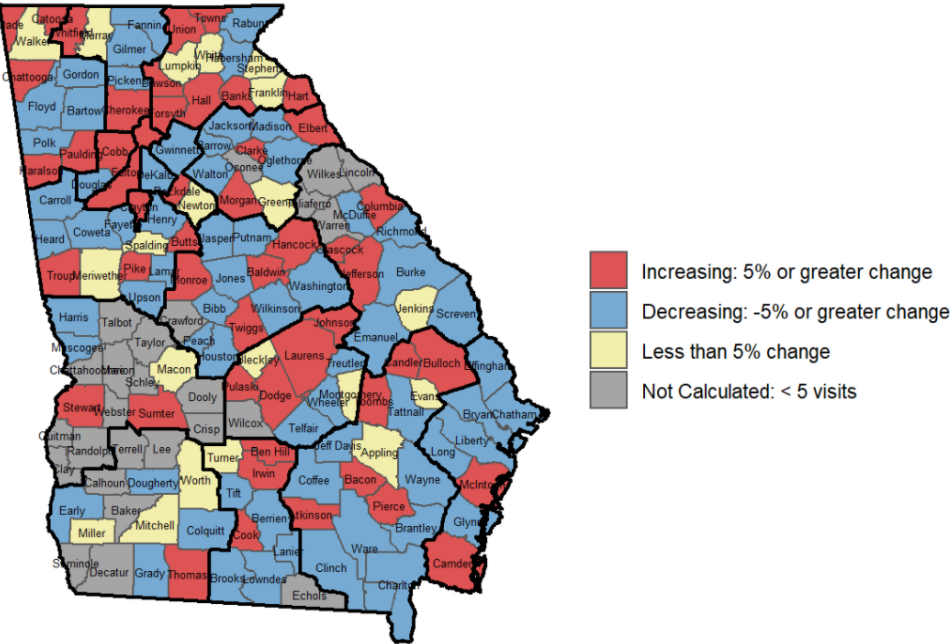
Emergency Department Visits

Emergency Department (ED) visits related to COVID-19 and ILI (influenza-like illness) have remained flat statewide over the two week period Oct. 3-16

Emergency Department (ED) Visits with COVID-19 Syndrome Percent Change 10/03-10/09, 10/10-10/16

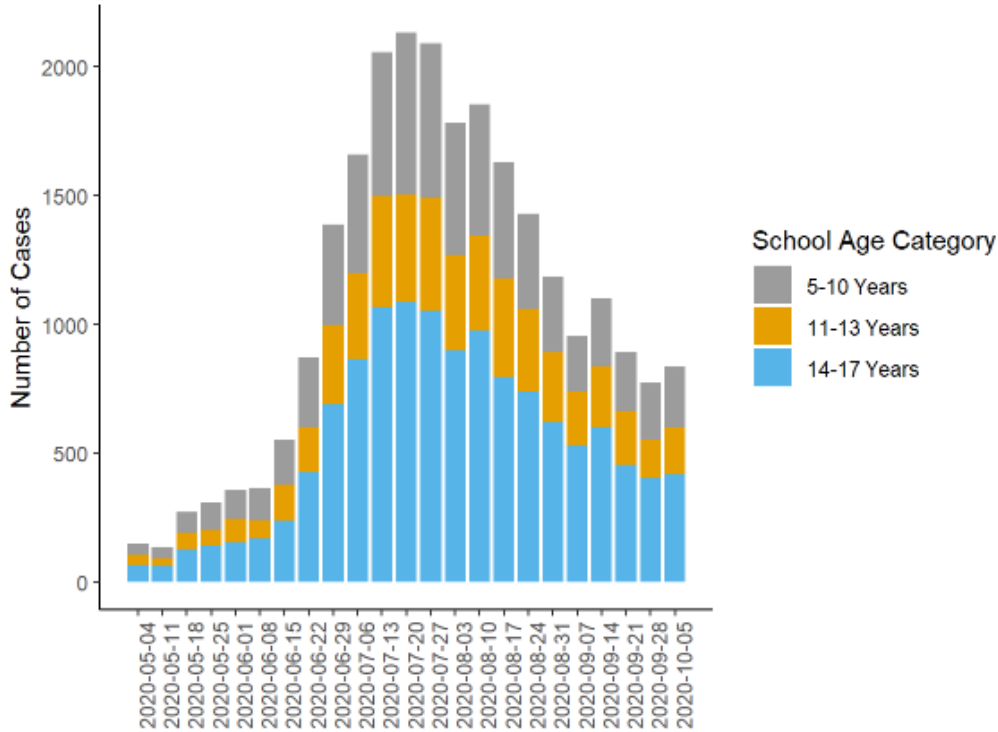


Emergency Department (ED) Visits with ILI Syndrome Percent Change 10/03-10/09, 10/10-10/16



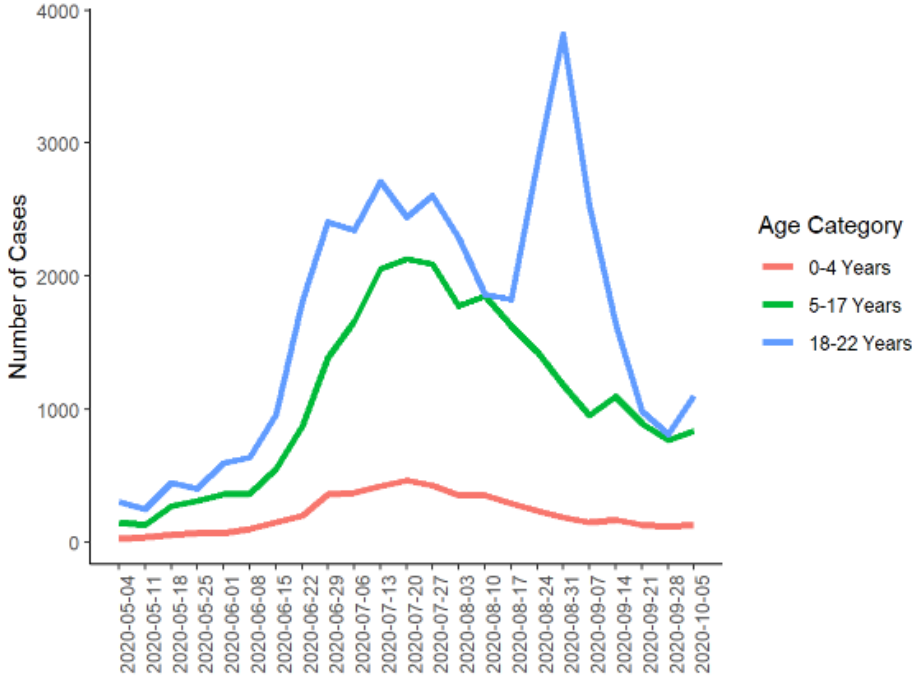
The Georgia Department of Public Health monitors influenza (flu) activity year-round throughout the state with the help of volunteer sentinel healthcare providers. Influenza activity is calculated based on the percentage of provider visits that are for "influenza-like illness" (fever >100° F AND cough and/or sore throat). Click on this link to see the [Flu Surveillance Report](#).

COVID-19 Cases Among K-12 School Aged Children*



*Report reflects Oct. 5-9

COVID-19 Cases by Age Category (Ages 0-22)*



*Report reflects week Oct. 5-9

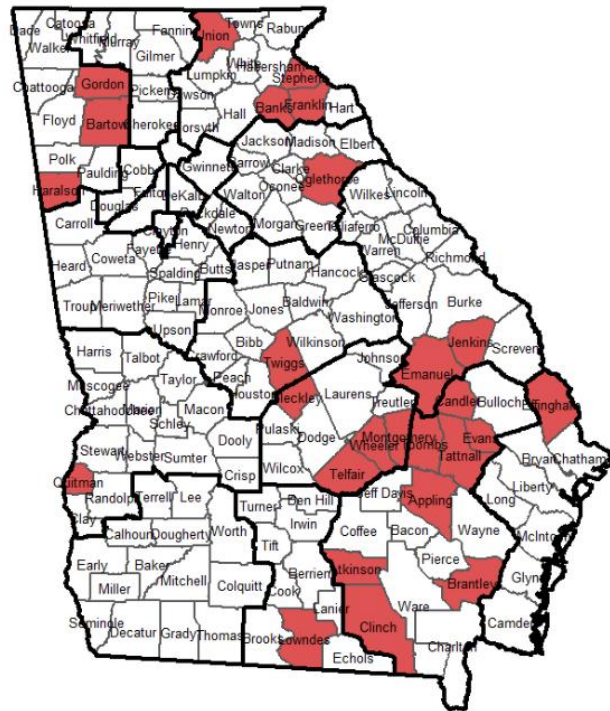
Outbreaks

Oct.11-17: **93 (decrease of 3 from previous week)**

These outbreaks are occurring in settings where people are physically congregating and underscore the need for physical distancing and source control. The highest number of outbreaks occurred in schools, long-term care facilities, correctional facilities and workplaces.

Setting	10/11-10/17	Change from Previous Week	Grand Total
Long-term Care Facility/Nursing Home	13	-5	782
School	25	-2	394
Workplace, Not Cafeteria	12	+1	250
Prison/Jail	8	+2	241
Manufacturing Facility	5	+2	177
Restaurant Or Deli	3	N/C	94
Church/Temple	7	-2	93
Other Congregate Setting	2	-2	83
Day Care Center	6	-1	81
Hospital	1	-1	69
Other	2	N/C	70
Food Production Facility			52
Office Setting	1	-1	43
Outpatient (Non-dialysis)	2	+1	43
Shelter			39
Grocery Store	2	+1	31
Other Inpatient Facility/Detox Facility	1	N/C	30
Farm	1	+1	20
Construction Site			17
Mental Hospital			17
Bar/Entertainment Venue			13
Funeral	1	+1	12
Camp			9
Hotel			9
Military Facility			7
Dialysis Center			6
Community			5
Private Home		-1	5
Wedding Reception			5
Resort			3
Banquet Facility	1	+1	1
Convention Center			1
Mental Health (Non-hospital)		-1	1
Picnic/Cookout/Potluck			1
Swimming Pool			1
Unknown			1
Water Park			1
Workplace Cafeteria			1

Counties with High Transmission Indicators*



Counties of High Transmission Indicators represent Counties with [14-day cases rate is > 100 cases/100,000 county residents (> 5 cases during this period)] AND [14-day average % positive PCR tests > 10% (> 20 total tests performed during this period)].

*By county of residence, report reflects Oct. 3-16

For updates on COVID-19, follow @GaDPH and @GovKemp on Twitter and @GaDPH and @GovKemp on Facebook.

For information about COVID-19, visit <https://dph.georgia.gov/novelcoronavirus> or <https://www.cdc.gov/coronavirus/2019-ncov/index.html>.

###